

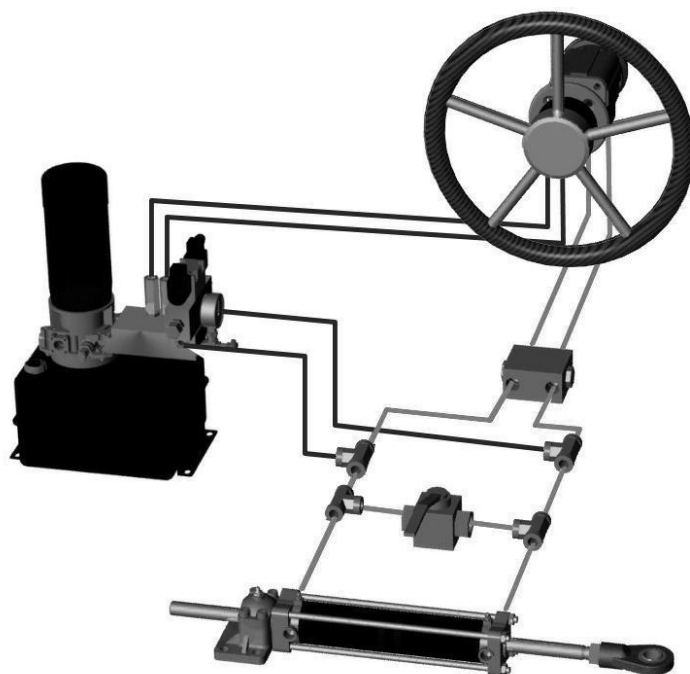
动力液压 舵机系统

意大利Marsi li 凭借在伺服转向系统方面的丰富经验，已在军用、工作船、商业船和大型游艇上安装了40多年；系统增加了产品的可靠性，特别是气缸执行器，增加了液压转向装置的坚固性和电动液压动力装置的实用性。

该系统设计用于通过方向盘进行辅助转向以及Joysti ck操纵杆控制，此外动力装置电磁阀能够接收自动驾驶仪的信号

整个方向盘的辅助转向将是柔软和轻松的，使您感觉有如驾驶汽车一样的感觉自如操控。

简易示意图如下：



MODEL	TORQUE KGXM	VESSEL LENGHT (*)	REVS HO TO HO (35° PT+35° ST)	WORKING PRESSURE	POWER UNIT VOLTAGE
T250	250	15-18 m	5,5	80 bar	12 o 24 V CC
T350	350	18-20 m	6,6	80 bar	12 o 24 V CC
T500	500	20-24 m	8,5	80 bar	12 o 24 V CC
T650 (**)	650	20-24 m	11	80 bar	12 o 24 V CC

** FOR THIS MODEL WE ALSO FORESEE THE USE OF A POWER UNIT HAVING WORKING PRESSURE OF 50 BAR AND, ON REQUEST, WITH AC ELECTRIC MOTOR 220/380.50 3PH.

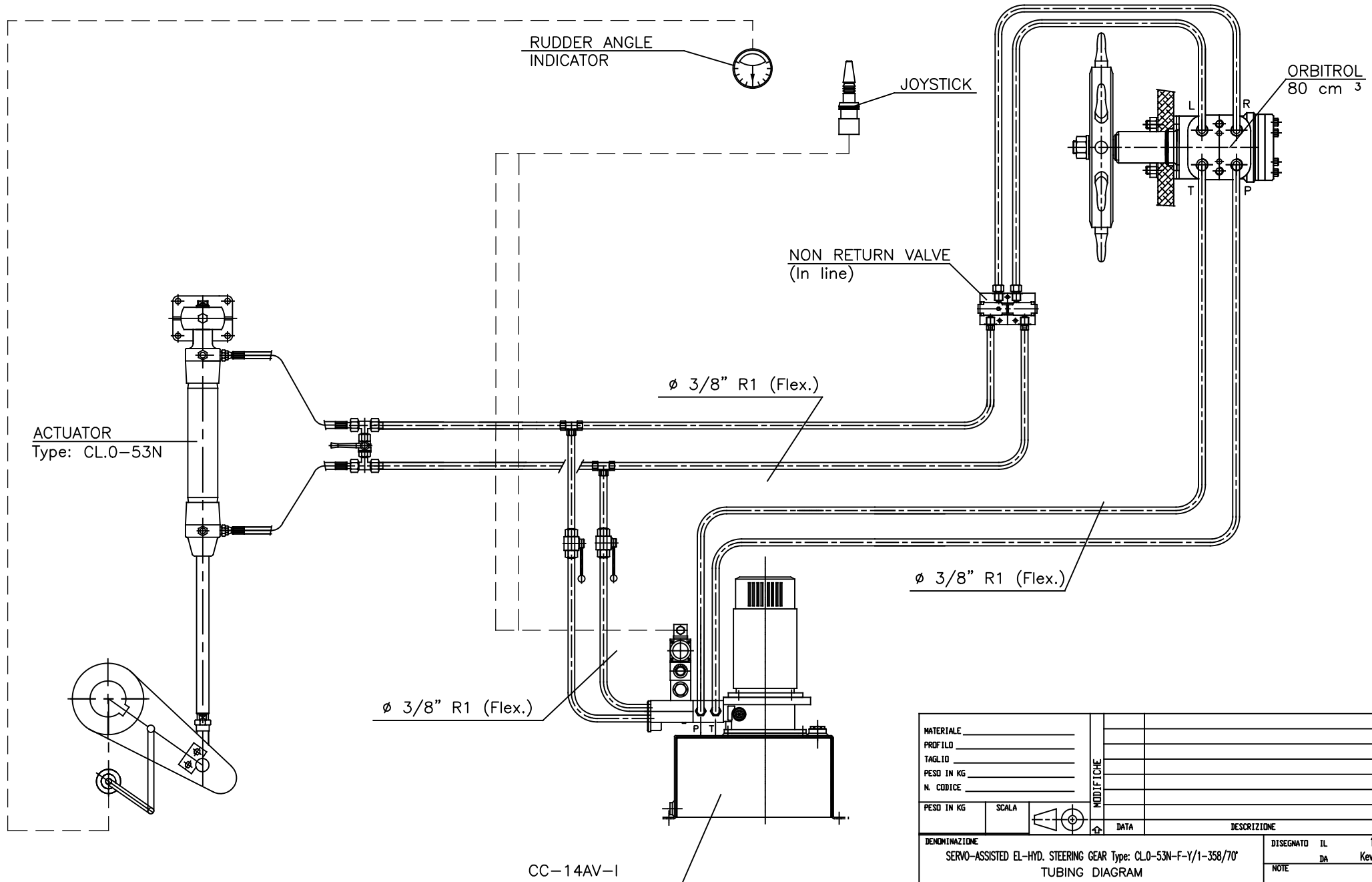
更多的请详见方案示意图，我们的销售和技术部门随时准备为您提供最适合您需求的技术解决方案，以及更优更经济的方案。

深圳欧益美贸易有限公司

兰先生13501584877（微信同号）

[Http://www.szoems.com](http://www.szoems.com)- e-mail: 646752606@qq.com

意大利进口舵机系统，单马达单站控制系统，可带随动摇杆和自动舵控制，
 扭矩大小可依据船只需求而定，可办理CCS认证



MATERIALE					7
PROFILO					6
TAGLIO					5
PESO IN KG					4
N. CODICE					3
PESO IN KG	SCALA				2
					1
DENOMINAZIONE		DATA	DESCRIZIONE	DISEGNATORE	
SERVO-ASSISTED EL-HYD. STEERING GEAR Type: CL.0-53N-F-Y/1-358/70'				DISEGNATO IL	17/12/18
TUBING DIAGRAM				DA	Kevin K. Beach
NOTE					
NUMERO CODICE				MA 5800	



Timonerie idrauliche
 Timonerie elettroidrauliche
 Telecomandi

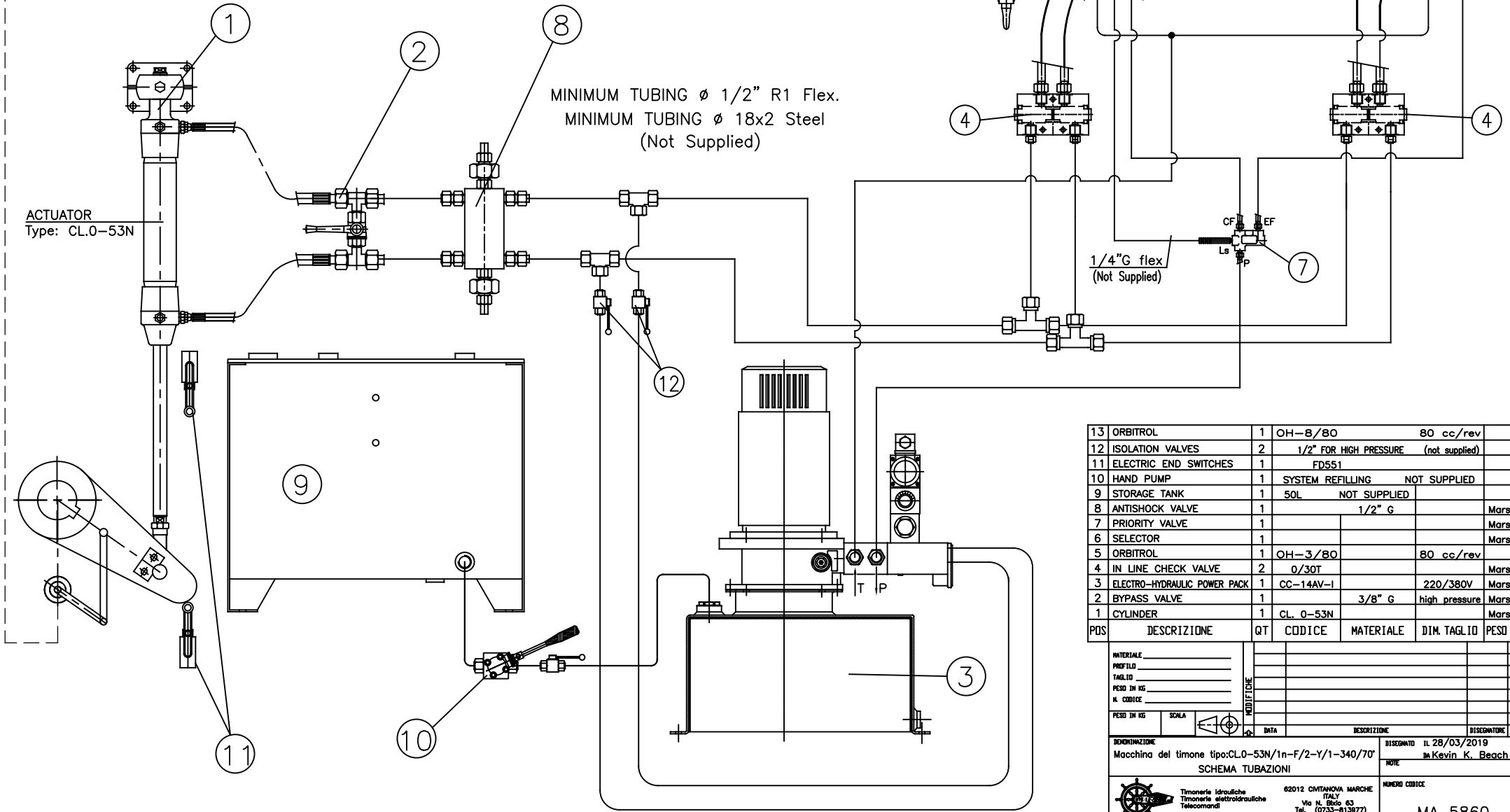
62012 CIVITANOVA MARCHE
 ITALY
 Via N. Bixio 63
 Tel. (0733-813977)
 Fax (0733-771284)

RUDDER ANGLE SYSTEM
NECESSARY WITH CLASSIFICATION SOCIETY
(Not Supplied)

RUDDER ANGLE
INDICATOR

RUDDER ANGLE
INDICATOR

扭矩大小可选，双站单马达电动舵机系统，可办理CCS认证

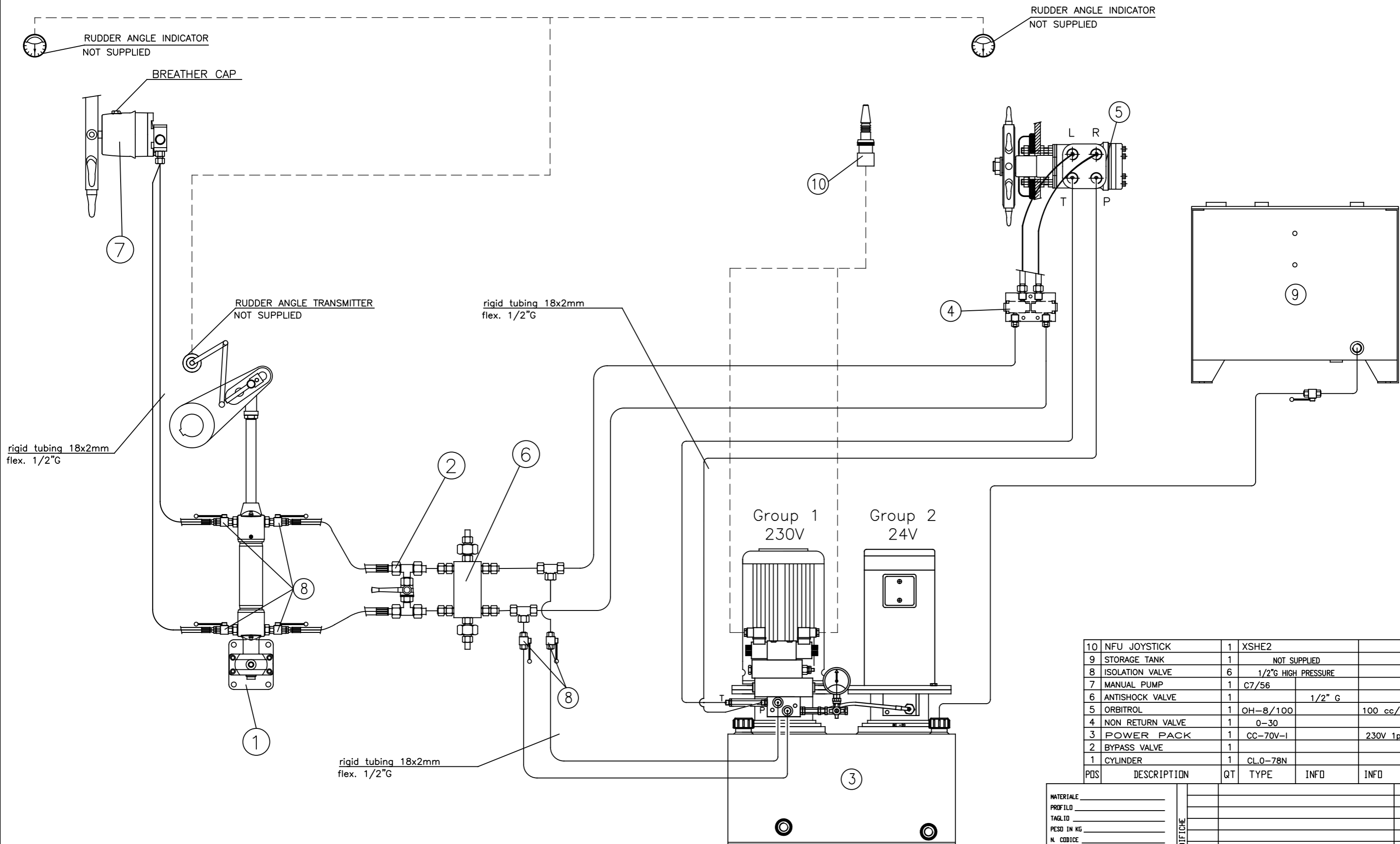


POS	DESCRIZIONE	QT	CODICE	MATERIALE	DIM. TAGLIO	PESO KG
13	ORBITROL	1	OH-8/80	80 cc/rev		
12	ISOLATION VALVES	2	1/2" FOR HIGH PRESSURE	(not supplied)		
11	ELECTRIC END SWITCHES	1	FD551			
10	HAND PUMP	1	SYSTEM REFILLING	NOT SUPPLIED		
9	STORAGE TANK	1	50L	NOT SUPPLIED		
8	ANTISHOCK VALVE	1	1/2" G			Marsili
7	PRIORITY VALVE	1				Marsili
6	SELECTOR	1				Marsili
5	ORBITROL	1	OH-3/80	80 cc/rev		
4	IN LINE CHECK VALVE	2	0/30T			Marsili
3	ELECTRO-HYDRAULIC POWER PACK	1	CC-14AV-1	220/380V		Marsili
2	BYPASS VALVE	1		3/8" G	high pressure	Marsili
1	CYLINDER	1	CL. 0-53N			Marsili

MATERIALE					7
PROFILO					6
TAGLIO					5
PESO IN KG					4
N. CODICE					3
PESO IN KG					2
					1

BENOMINAZIONE: Macchina del timone tipo: CL.0-53N/1n-F/2-Y/1-340/70"
 SCHEMA TUBAZIONI
 DATA: _____ DESCRIZIONE: _____ DISSEGNAZIONE: _____
 DISSEGNO IL 28/03/2019
 IN Kevin K. Beach
 NUMERO CODICE: MA 5860

Timonerie Idrauliche
 Timonerie elettroidrauliche
 Telecomandi
 62012 CIVITANOVA MARCHE
 ITALY
 Via N. Bello 63
 Tel. (0733-813877)
 Fax (0733-771284)

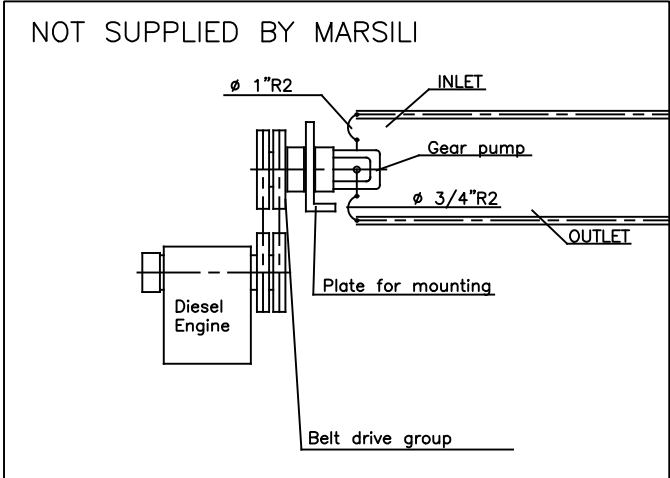
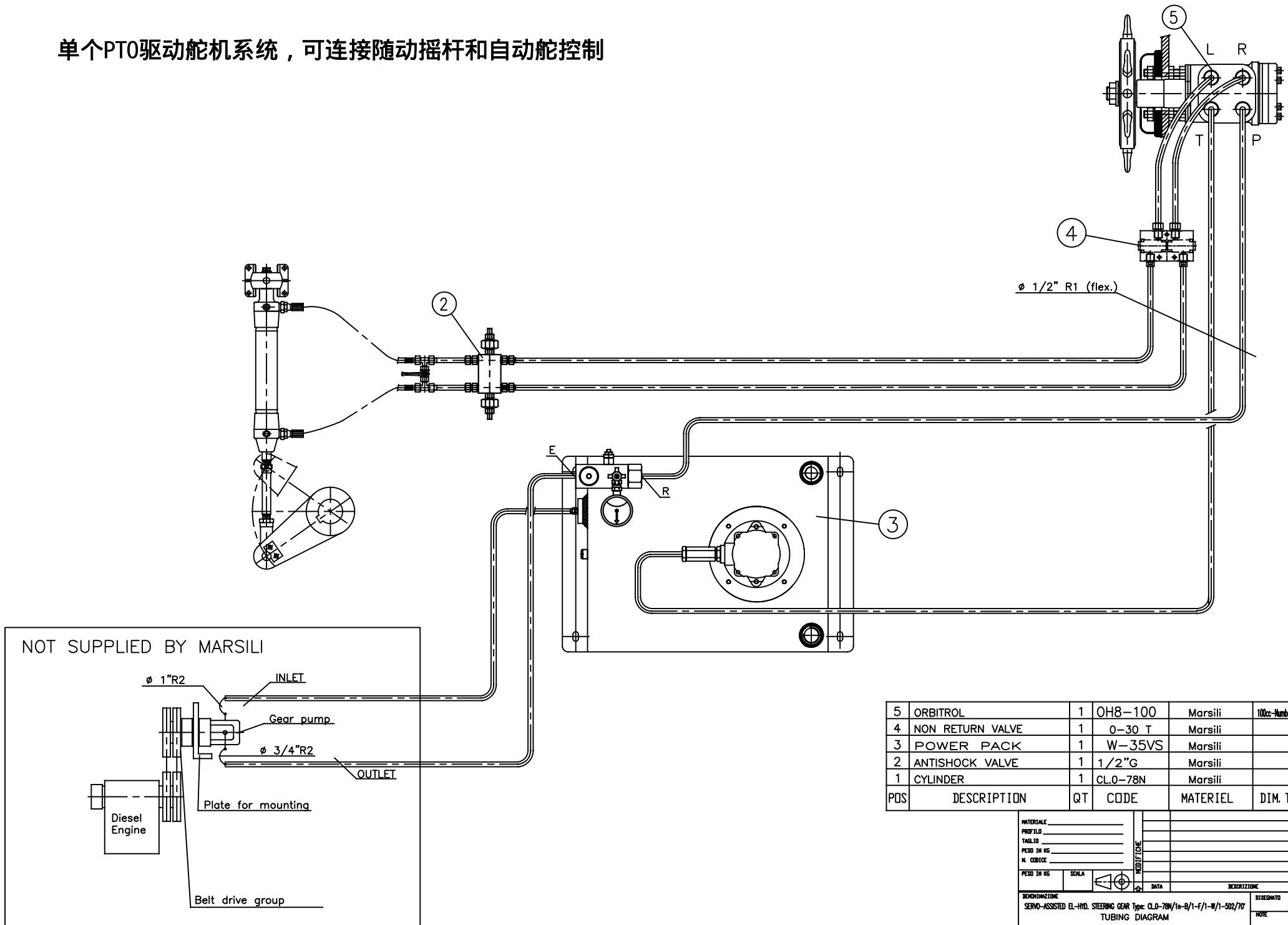


10	NFU JOYSTICK	1	XSHE2			Marsili
9	STORAGE TANK	1	NOT SUPPLIED			
8	ISOLATION VALVE	6	1/2"G HIGH PRESSURE			Marsili
7	MANUAL PUMP	1	C7/56			Marsili
6	ANTISHOCK VALVE	1		1/2" G		Marsili
5	ORBITROL	1	OH-8/100		100 cc/rev	Marsili
4	NON RETURN VALVE	1	0-30			Marsili
3	POWER PACK	1	CC-70V-1		230V 1ph	Marsili
2	BYPASS VALVE	1				Marsili
1	CYLINDER	1	CL.0-78N			Marsili
POS	DESCRIPTION	QT	TYPE	INFO	INFO	BRAND

MATERIALE						7
PROFILO						6
TAGLIO						5
PESO IN KG						4
N. CODICE						3
PESO IN KG	SCALA					2
						1
DENOMINAZIONE		DATA		DESCRIZIONE		DISEGNATORE
Steering Gear type: CL.0-78N/1n-F/1-B/1-Y/2-351/70'		IL 22/01/2020		DA Beach Kevin K.		
TUBING DIAGRAM		NOTE		NUMERO CODICE		
		Timonerie idrauliche Timonerie elettroidrauliche Telecomandi		62012 CIVITANOVA MARCHE ITALY Via N. Bixio 63 Telef. (0733-813977) Fax (0733-771284)		MA 6010

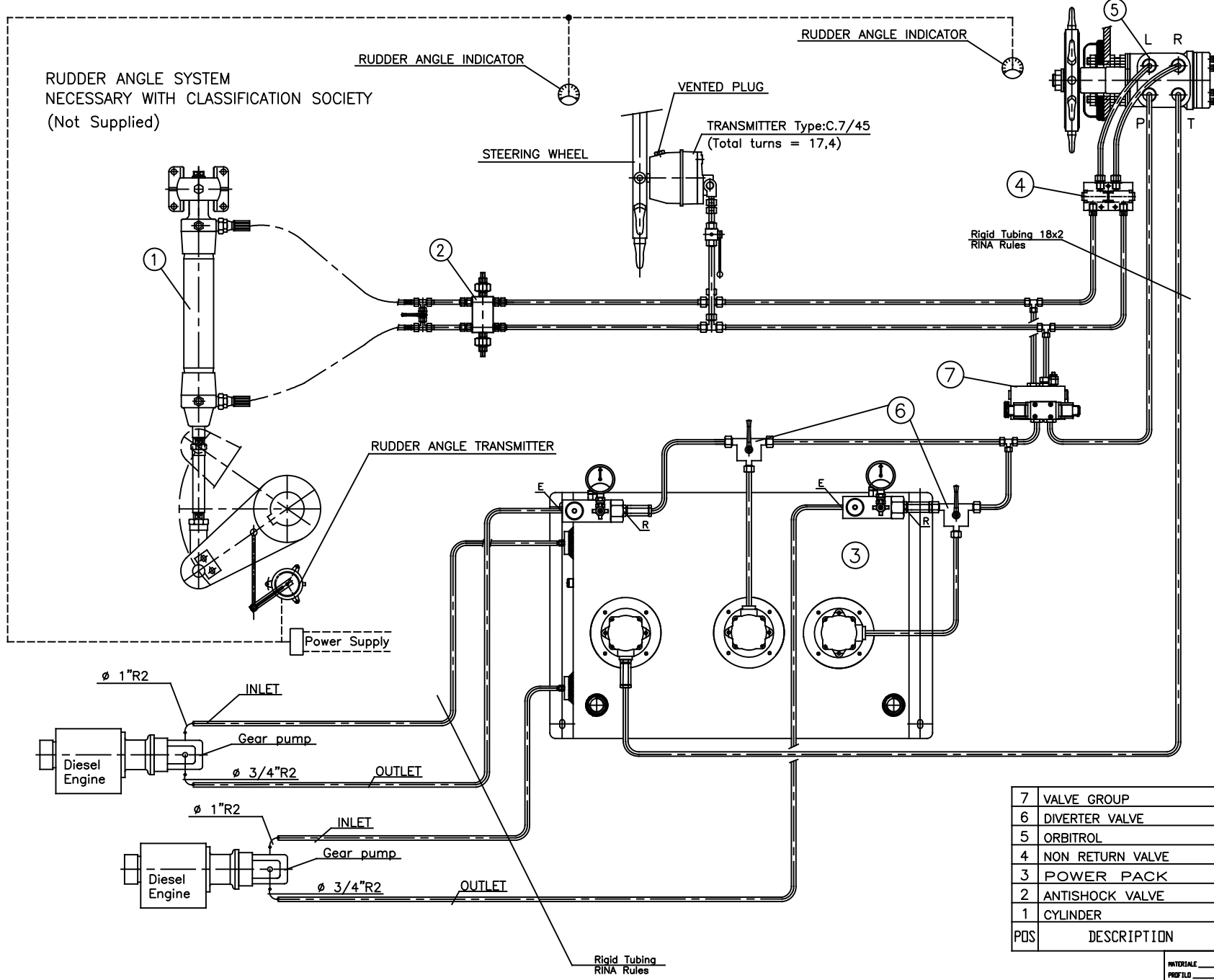
该方案采用AC+DC两个电动马达，起着一备一用的作用，满足各种状况条件下船只的正常运转，并带有手动应急操作。符合CCS要求，适用于各类船只，特别是工作船和客船。扭矩大小可依据船只需求而定。

单个PTO驱动舵机系统，可连接随动摇杆和自动舵控制



PDS	DESCRIPTION	QT	CODE	MATERIEL	DIM. TAGLIO	POID KG
5	ORBITROL	1	OH8-100	Marsili	100cc-Number of turns=7,3	
4	NON RETURN VALVE	1	0-30 T	Marsili		
3	POWER PACK	1	W-35VS	Marsili		
2	ANTISHOCK VALVE	1	1/2"G	Marsili		
1	CYLINDER	1	CL.0-78N	Marsili		

MATERIALE	PROFILLO	TAGLIO	PESO IN KG	N. COBICE	PESO IN KG	SCALA	MODIFICHE	DATA	DESCRIZIONE	DISSEGNIATORE
RENDIMENTO SERVO-ASSISTED EL-HYD. STEERING GEAR Type: CL.0-78N/1n-B/1-F/1-W/1-502/70' TUBING DIAGRAM										
DISSEGNO IL 07/03/2019 NOTE da K.K.Bauch										
NUMERO COBICE MA 5844										



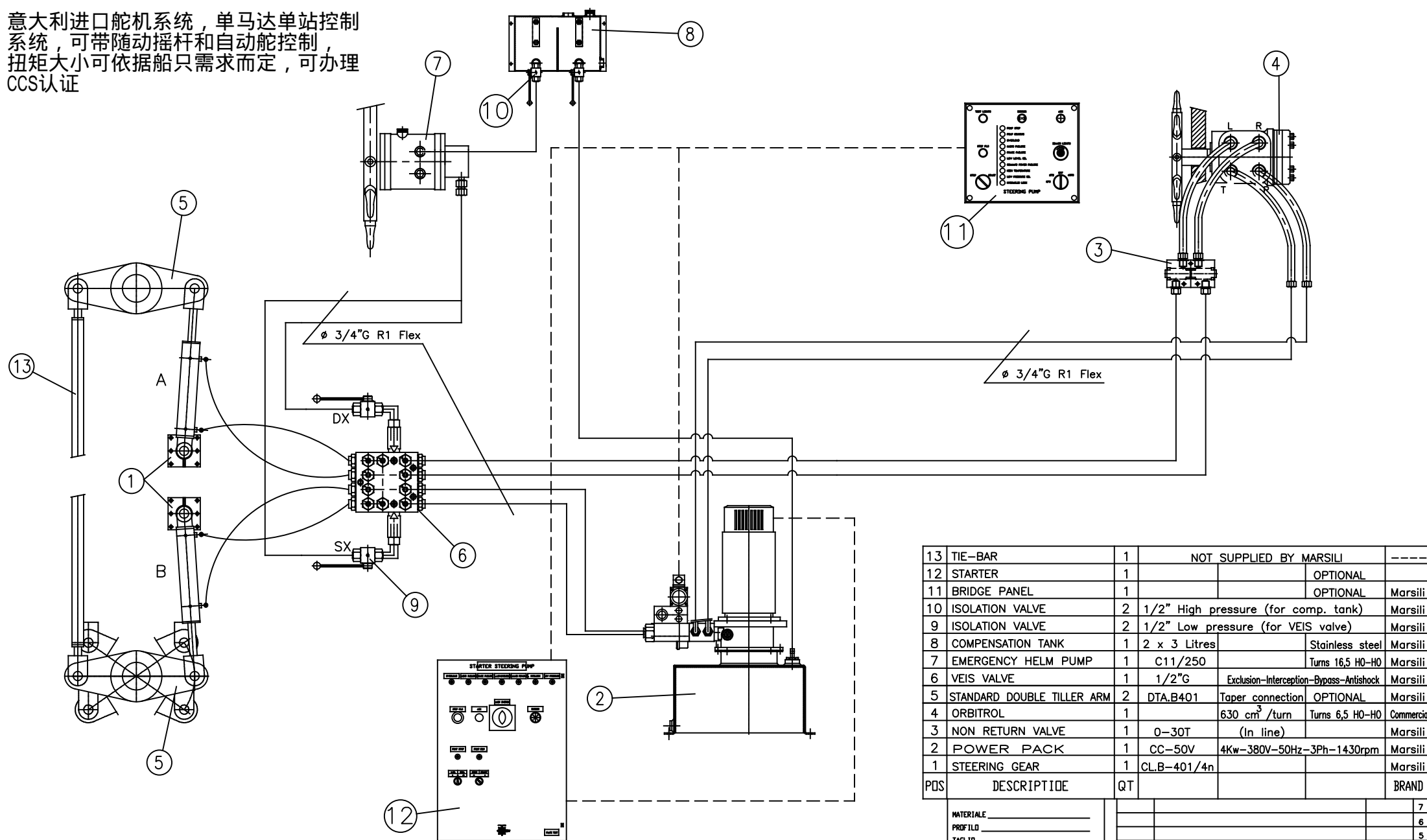
7	VALVE GROUP	1	check valve, flow regulator, solenoid valve.			
6	DIVERTER VALVE	2	DH20/3	3/4"G		
5	ORBITROL	1	OH8-100	Marsili	100x-Number of turns=7.3	
4	NON RETURN VALVE	1	0-30 T	Marsili		
3	POWER PACK	1	W-100I	Marsili		
2	ANTISHOCK VALVE	1	1/2"G	Marsili		
1	CYLINDER	1	CL.0-78N	Marsili		
PDS	DESCRIPTION	QT	INFO	INFO	INFO	INFO

MATERIALE					7
PROF. ILD.					6
TAGLIO					5
PESO IN KG					4
N. COBEC					3
PESO IN KG					2
SCALA					1
DATA					
DESCRIZIONE					
DISEGNATO					
IL					
25/03/2019					
NOTE					
MA					
NUMERO COBICE					
MA 5844					

2012 CANTANOVA MARCHE ITALY
 Via N. Steno 63
 Tel. (0733-813977)
 Fax (0733-771284)

该方案为双PTO泵，并带有电磁阀控制，可接自动舵和摇杆操控
 符合CCS要求，适用于各种用途的船型，扭矩大小可依据船只大小而定

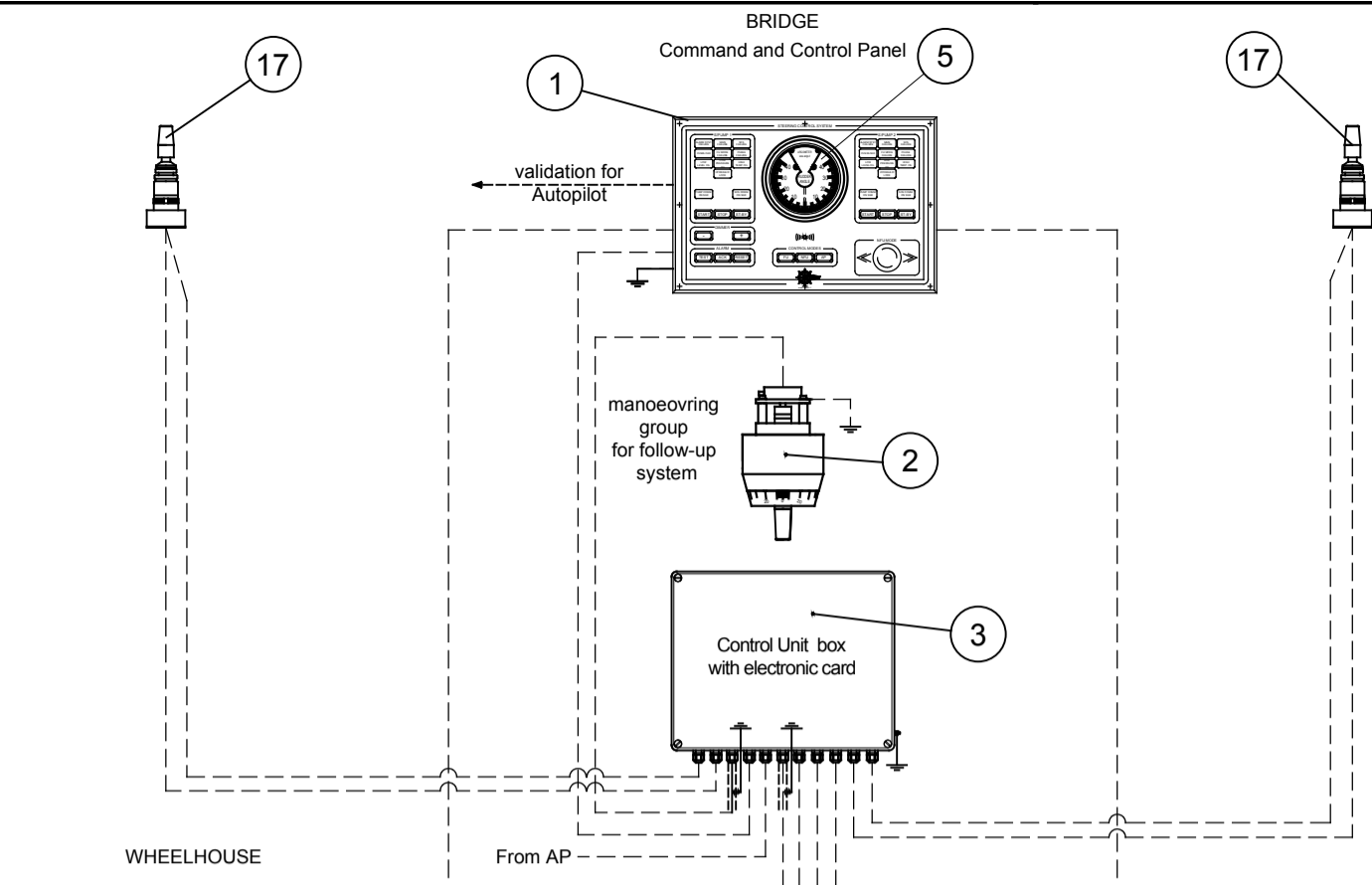
意大利进口舵机系统，单马达单站控制
 系统，可带随动摇杆和自动舵控制，
 扭矩大小可依据船只需求而定，可办理
 CCS认证



13	TIE-BAR	1	NOT SUPPLIED BY MARSILI		----
12	STARTER	1			OPTIONAL
11	BRIDGE PANEL	1			OPTIONAL Marsili
10	ISOLATION VALVE	2	1/2" High pressure (for comp. tank)		Marsili
9	ISOLATION VALVE	2	1/2" Low pressure (for VEIS valve)		Marsili
8	COMPENSATION TANK	1	2 x 3 Litres		Stainless steel Marsili
7	EMERGENCY HELM PUMP	1	C11/250		Turns 16,5 HO-HO Marsili
6	VEIS VALVE	1	1/2" G	Exclusion-Interception-Bypass-Antishock	Marsili
5	STANDARD DOUBLE TILLER ARM	2	DTA.B401	Taper connection	OPTIONAL Marsili
4	ORBITROL	1		630 cm ³ /turn	Turns 6,5 HO-HO Commercial
3	NON RETURN VALVE	1	0-30T	(in line)	Marsili
2	POWER PACK	1	CC-50V	4Kw-380V-50Hz-3Ph-1430rpm	Marsili
1	STEERING GEAR	1	CLB-401/4n		Marsili
PDS	DESCRIPTIVE	QT			BRAND

MATERIALE					7
PROFILO					6
TAGLIO					5
PESO IN KG					4
N. CODICE					3
PESO IN KG					2
SCALA					1
MODIFICHE					
DATA					
DESCRIZIONE					
DISEGNATORE					
DENOMINAZIONE				DISEGNATO IL 23 Novembre 2010	
Hydraulic Steering Gear : CLB-401/4n-B-F/1-Y/1-2622/74'				DA Fini Mauro	
TUBING DIAGRAM				NOTE	
Timonerie idrauliche Timonerie elettroidrauliche Telecomandi				NUMERO CODICE 62012 CIVITANOVA MARCHE ITALY Via N. Bixio 63 Telef. (0733-813977) Fax (0733-771284)	
				MA 4473	

PRELIMINARY



该系统为电子舵机系统，扭矩依据船只需求而定，并带有手动应急控制，让您享受开船如开车一样轻松。系统符合CCS的认证要求。

Main Characteristics of the System

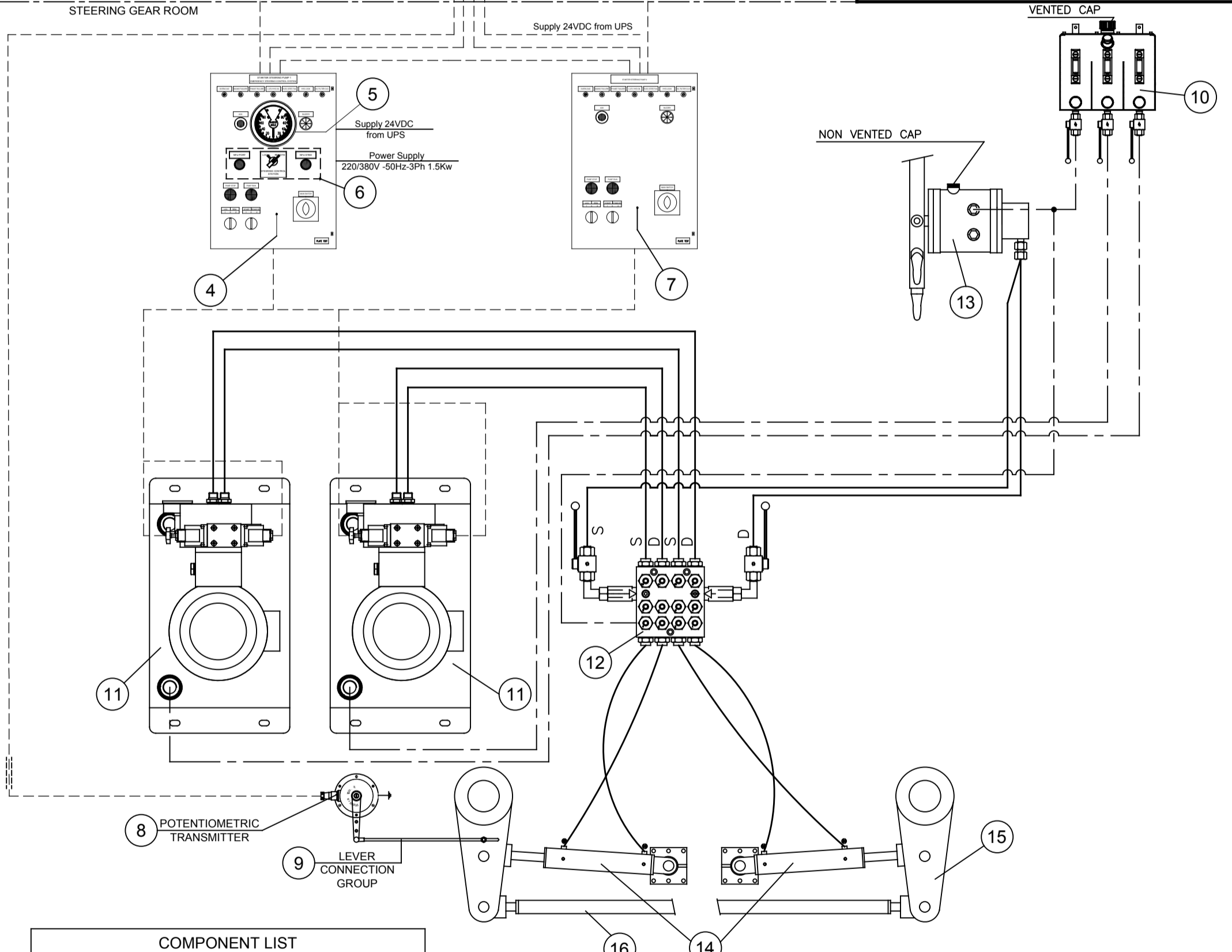
Max Torque Normal Condition :2622Kgm on both rudders at 35°
 Working Pressure :100Bar (For Power Packs)
 Rated Pressure : 125Bar (For Relief Valves)
 Hydrostatic Test Pressure : 188Bar
 Manoeuvre Time from Hard Over to Hard Over = 15sec

Main Characteristics of Power Pack

Electric Motor : 3Kw - 380V - 50Hz - 3Ph
 Solenoid Voltage : 24V
 Predisposed for Alarms on Bridge Panel / Starters

Main Characteristics of Cylinders


Cubic Capacity: 4123cc
 Rudder Angle : 35° + 35°
 Type of Cylinder : differential cylinder
 Cylinder Material : Steel

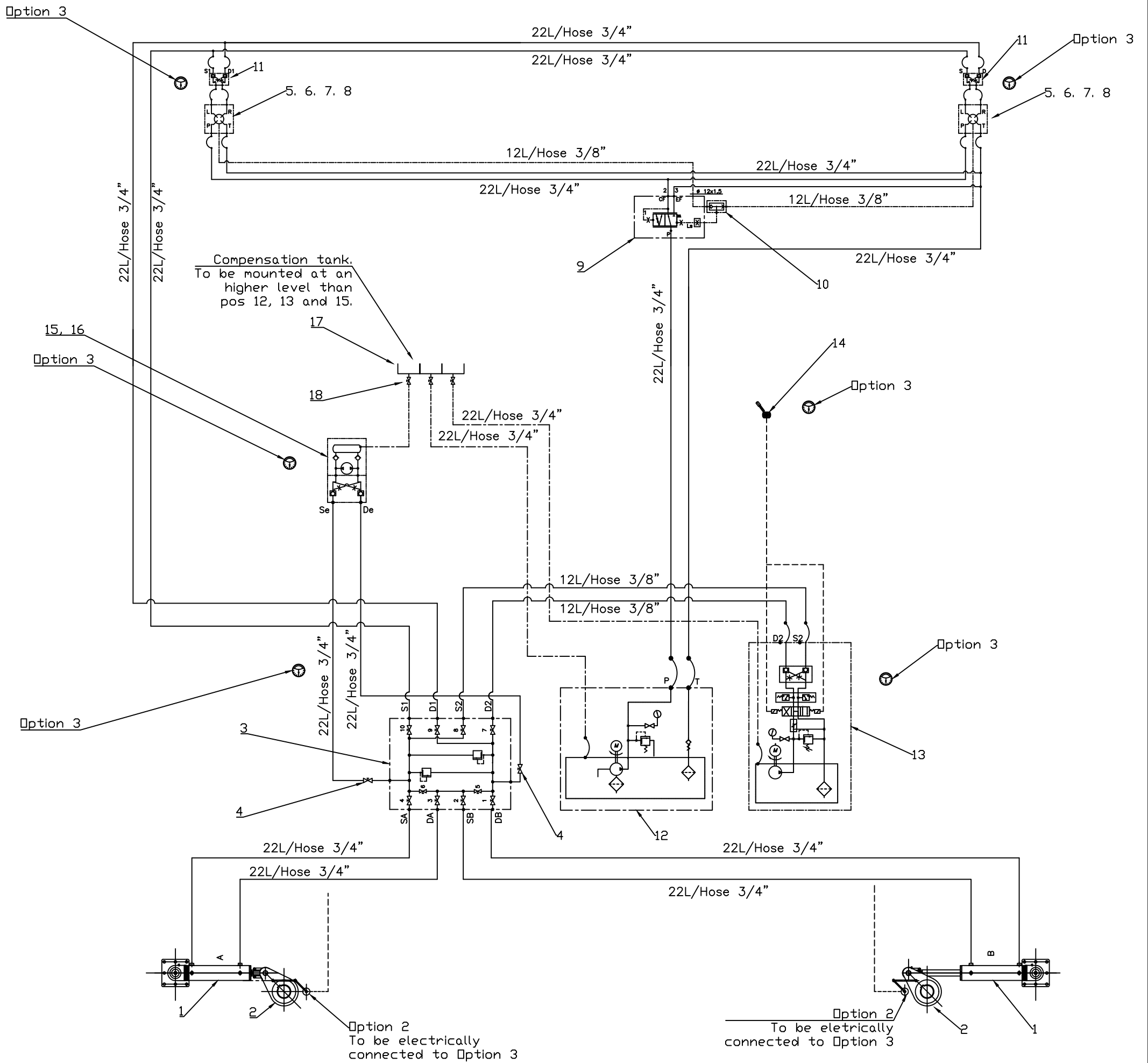


COMPONENT LIST

POS.	EQUIPMENT	MODEL
1	COMMAND AND CONTROL PANEL	1T-2HPU
2	HANDWHEEL MANOEUVRING GROUP	GV/160-IM
3	CONTROL UNIT BOX	CUB
4	STARTER FOR HPU 1 3Kw-220/380V-50Hz-3ph with electronic card type Approval for alarm	---
5	RAI MED/TYPE APPROVAL omologation for SGR	P/85-G
6	EMERGENCY CONTROL NFU MODE	---
7	STARTER FOR HPU 1 3Kw-220/380V-50Hz-3ph with electronic card type Approval for alarm	---
8	POTENTIOMETRIC TRANSMITTER	TR/120-MP
9	LEVER CONNECTION GROUP	LEVER
10	COMPENSATION TANK	3x1Litres
11	POWER PACK	CC-35V
12	V.E.I.S. VALVE	1/2"
13	EMERGENCY HELM PUMP	C11/250
14	HYDRAULIC CYLINDERS	CL.B-401
15	DOUBLE TILLER ARM	---
16	TIE BAR	---
17	JOYSTICK	XSHE

NOT SUPPLIED
NOT SUPPLIED

MATERIALE					7	
PROFILO					6	
TAGLIO					5	
PESO IN KG					4	
N. CODICE					3	
PESO IN KG	SCALA				2	
				DATA	DESCRIZIONE	DISEGNATORE
DENOMINAZIONE El/Hydraulic Steering Gear System Type: CL.B-401/4n-H-Y/2-2622/70°				DISEGNATO IL 12/12/2019 DA K.K.BEACH		
GENERAL ELECTRIC & TUBING DIAGRAM				NOTE Elec. Diagram AC.01809.00		
 Timonerie idrauliche Timonerie elettroidrauliche Telecomandi				62012 CIVITANOVA MARCHE ITALY Via N. Bixio 63 Telef. (0733-813977) Fax (0733-771284)		
				NUMERO CODICE MA 5997		
REVISIONE						



该系统适用于双体船系统，采用总阀进行左右油缸同步控制
 扭矩大小可依据船只需求而定，可办理CCS，RINA等认证

Positon numbers refers to positon numbers on Quotation 20615 rev.1

Note	Revision	Date	Drawn	Approved

Name	Drawn	Design	Appr.	Scale
HH	HH			1:1
Date	11.7.17			
Work no.				
Customer Sunrice marinware				
Dwg. no.				
MH2-002788				
Parts list:			Side: 1/1	